

Network diagnosis and monitoring PROmanage® NT



Indu-Sol GmbH – Specialist in Fieldbus Technology



Indu-Sol GmbH
Blumenstrasse 3
04626 Schmoelln

Telephone:
+49 (0) 34491 5818-0
Telefax:
+49 (0) 34491 5818-99

Email:
info@indu-sol.com
Homepage:
www.indu-sol.com

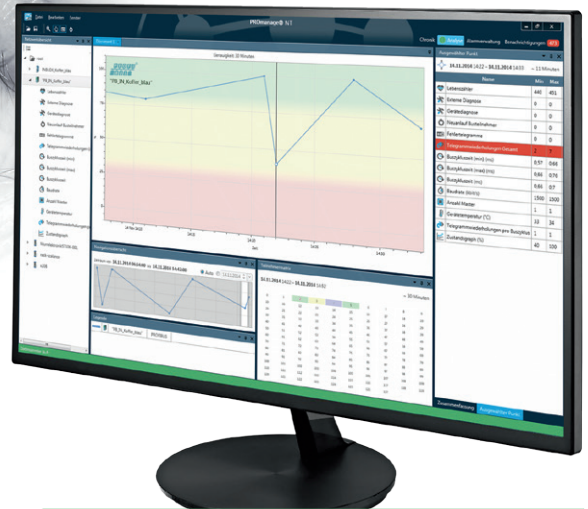


“Monitor your network!”

Gradual aging, wear and tear in the production environment and bottlenecks lead to progressive deterioration in the quality of networks.

The monitoring software **PROmanage® NT** provides timely warning when abnormalities appear. The early warning enables you to carry out maintenance in good time, thereby minimizing break-downs and plant outages.

PROmanage® NT makes it possible for you to analyze and evaluate information on the condition of fieldbus systems and industrial networks and store it on the long haul. The information is transmitted to a central point to provide you an overview. You can leave healthy networks alone, avoiding unnecessary maintenance but taking action any time an alarm warns you of abnormalities.



Highlights

- Centralized monitoring of all fieldbusses and networks
- Avoids plant outages
- Timely warning of abnormalities via OPC, SNMP or email
- Data are available up to one year to-the-minute
- Rapid installation
- Easy device setup by means of an automated or manual device scan

Network chronicle

How healthy is my network?

The chronicle of the network provides rapid information which is easy to read on:

- Current network status
- Periods of time in which your network operates free of errors
- Point in time when disturbances occurred (with time stamp)

Current network status

Free of disturbances for 19 minutes





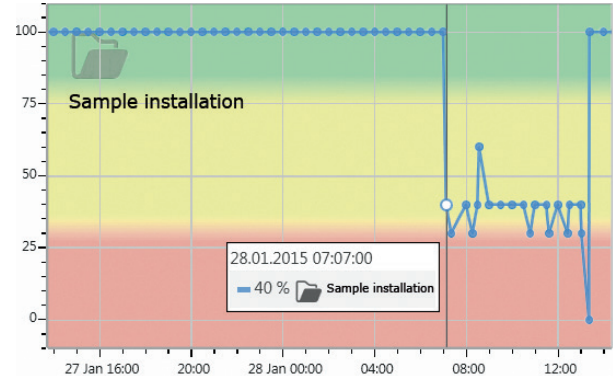
Indu-Sol GmbH
Blumenstrasse 3
04626 Schmoelln

Telephone:
+49 (0) 34491 5818-0
Telefax:
+49 (0) 34491 5818-99

Email:
info@indu-sol.com
Homepage:
www.indu-sol.com

Display of network data

The user interface is arranged so as to make it easy for the user to find information. It can be tailored to meet your needs and you can use two screens. The graphical display provides a comparison of several parameters and can handle several devices, e.g. you can correlate parameters such as device temperature and device failures of different devices so as to be able to identify the cause of disturbances.



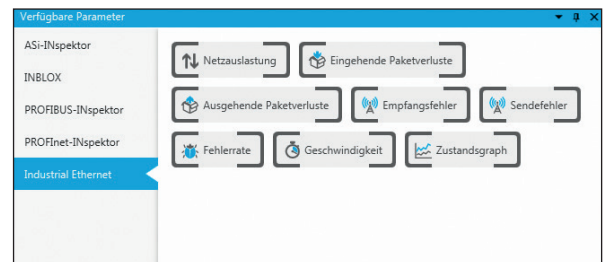
Event messages

Integrated management of threshold values allows the user to specify the limiting values for network parameters. As soon as these threshold values are reached, an entry complete with time stamp is written automatically into the event log. Just one click is needed to retrieve network disturbances from the event log.

Jan	Feb	Mrz	Apr	Mai	Jun	Jul	Aug	Sep												
1	2	3	4	5	6	7	8	9	10	11	12	13	14	15	16	17	18	19	20	21
So	Mo	Di	Mi	Do	Fr	Sa	So	Mo	Di	Mi	Do	Fr	Sa	So	Mo	Di	Mi	Do	Fr	Sa
Es werden maximal 1000 Elemente für die eingestellten Filter angezeigt.																				
	Meldungstyp																	Datum		
	Teilnehmer																	Schwellwert überschritten INBLOX Maschinenbus3 Mod3 - Ch. 1 - DP Diag		
																		Parameter Telegrammwiederholungen pro Buszyklus		
																		Wert 1		
																		Schwellwert 1		
	Teilnehmer																	Schwellwert überschritten INBLOX Maschinenbus3 Mod2 - Ch. 1 - DP Diag		
																		Parameter Telegrammwiederholungen pro Buszyklus		
																		Wert 1		
																		Schwellwert 1		
	Teilnehmer																	Schwellwert überschritten INBLOX Maschinenbus3 Mod1 - Ch. 1 - DP Diag		
																		Parameter Telegrammwiederholungen pro Buszyklus		
																		Wert 1		
																		Schwellwert 1		
	System																	Der PROmanage NT Datensammler wurde neu initialisiert.		

Alerting

The implemented alarm management system provides automated message forwarding. The user selects the desired medium (email, messaging services, OPC, SNMP) to transfer messages in a timely manner directly to the appropriate area of responsibility, thereby shortening action times and avoiding unnecessary plant breakdowns.



Possible types of alert



Email



OPC



SNMP trap

Ordering details

PROmanage® NT (80 ports*)

PROmanage® NT (320 ports*)

PROmanage® NT (640 ports*)

Art. No.

117000032

117000034

117000036

* The licence defines the maximum number of network ports or devices retrieved simultaneously.
(Ethernet switch: number of network ports = number of licence ports, 1 PB-INspektor® = 8 ports, 1 PN-INspektor® = 16 ports)